

GLAMORA

GLAMORA

Bespoke Design
Wallcoverings

INDEX

Company Profile

P. 7

Creative Collection

P. 12

Chapter XII

P. 15

Colour Variants

P. 103

Technical Informations

P. 120

GLAMORA



Founded in 2010, Glamora translates its Italian expertise into unique wallpapers. The bespoke wallcoverings allow interior designers and architects to convey the desired identity and atmosphere to any interior. Top quality materials, unique patterns, and sophisticated colour palettes define the brand's ethos and aesthetic. The collections are the result of international research carried out on current trends and themes of inspiration, filtered and reinterpreted through the lens of the brand's sensibility and taste. The company's distinguishing feature is its constant commitment to innovation, a value evident both in the creation of new wallcoverings whose textures are pleasing to the touch and which are eco-friendly and recyclable, and in its distinctive, original, contemporary style. Glamora is equally as committed to the development of resources and tools in order to offer professionals cutting-edge services, able to meet any design requirement.

Fondata nel 2010, Glamora traduce il suo saper fare italiano in carte da parati uniche. I wallcovering sono realizzati su misura e permettono a interior designer e progettisti di trasmettere agli interni l'identità e l'atmosfera desiderate. La qualità dei materiali, l'originalità dei motivi decorativi e le palette di colori sofisticate definiscono la filosofia e l'estetica del brand. Le collezioni sono frutto di una ricerca condotta a livello internazionale sugli elementi di tendenza e sui temi d'ispirazione, poi filtrati e reinterpretati dalla sensibilità e gusto del marchio. Elemento caratterizzante dell'azienda è il costante impegno nell'innovazione, proposito che si manifesta sia nella creazione di nuovi rivestimenti con texture piacevoli al tatto, rispettosi dell'ambiente e riciclabili, sia in uno stile contemporaneo originale e distintivo. Glamora dedica la medesima attenzione allo sviluppo di risorse e strumenti per offrire ai professionisti servizi all'avanguardia, in grado di soddisfare ogni esigenza progettuale.

BESPOKE DESIGN SERVICE

Glamora wallcoverings are bespoke in relation to the surface to be covered, in order to integrate it with the space without compromising its original visual impact. The subjects can be customised on demand in the desired colours and shapes to meet the specific requirements of interior designers. Once the wallcovering has been chosen, the Glamora team will help the client to realise their vision of inner space.

Le carte da parati di Glamora vengono realizzate su misura in rapporto alla superficie da rivestire per integrarsi con l'ambiente, mantenendo inalterata la resa visiva originaria. I soggetti possono essere personalizzati su richiesta nei colori e nelle forme desiderati per rispondere alle esigenze specifiche dei progettisti. Una volta scelto il wallcovering, il team di Glamora aiuterà il cliente a tradurre in realtà la propria visione d'interior design.



GLAMORA SHOWROOM MILANO



The Glamora showroom is located in an historic building on Via Solferino 27 in Milan, between Porta Garibaldi and Brera. This prestigious space in constant evolution is designed to communicate the variety of the Glamora wallcovering styles. Inside, you can see the whole range of collections in full size, as well as receive assistance and personal design consultation from one of the company's architects.

A Milano, tra Porta Garibaldi e Brera, ha sede lo showroom Glamora, in un palazzo storico di via Solferino 27. Uno spazio prestigioso e in costante evoluzione pensato per comunicare la varietà stilistica dei wallcovering Glamora. Al suo interno è possibile visionare l'intera gamma delle collezioni in scala reale, oltre a ricevere assistenza e consulenza progettuale personale da parte di un architetto dell'azienda.

CREATIVE COLLECTION

Creative Collection is the ongoing collection by Glamora, enhanced every year by the addition of a new chapter full of fresh proposals.

Multi-faceted and in continuous evolution, Creative Collection is the result of international research carried out to identify new style codes that are then interpreted using the characteristic cross-sectional, inter-disciplinary sensitivity of Glamora.

The proposed patterns are a harmonious expression of a grand creative freedom, which moves fluidly between art, design, architecture, fashion and photography.

The collection is available in two finishes: GlamDecor, the vinyl wallcovering that enhances the design texture through a delicate fabric effect, and GlamTrace, the nonwoven wallcovering in natural fibers that maximizes the pictorial trait thanks to characteristics similar to handmade paper.

Creative Collection è la collezione continuativa di Glamora che si arricchisce ogni anno di un nuovo capitolo fatto di proposte inedite.

Poliedrica e in continua evoluzione, Creative Collection nasce da una ricerca condotta a livello internazionale per individuare codici stilistici emergenti e reinterpretati attraverso la sensibilità, trasversale e interdisciplinare, propria di Glamora.

I soggetti proposti sono espressione armoniosa di una grande libertà creativa, che si muove con fluidità tra arte, design, architettura, moda e fotografia.

La collezione è disponibile in due finiture: GlamDecor, il rivestimento vinilico che esalta la matericità del disegno attraverso un delicato effetto tela, e GlamTrace, il tessuto-non-tessuto in fibre naturali che massimizza il tratto pittorico grazie a caratteristiche simili a quelle della carta fatta a mano.



Multi-faceted and in continuous evolution, Creative Collection is the result of international research carried out to identify new style codes that are then interpreted using the characteristic cross-sectional, inter-disciplinary sensitivity of Glamora.



CHAPTER XII

The many sources of inspiration behind Chapter XII do have something in common: an imaginary trip through Italy, through interiors and exteriors, to explore new stylistic settings, by combining iconic motifs and worlds seen through new eyes.

Cities and landscapes are evoked, reinterpreted with lomographic style and transformed into faded images and smudges with striking photographic effects.

The collection builds bridges between the abstract and cubist shapes of 20th century art, the graphic dictionary of the 1970s and thick brushstrokes of colour portraying a multi-faceted version of nature that is sometimes pale and elusive and at times exuberant and bursting with joy.

A real wunderkammer to be drawn from to transfer creativity and personality to interior design projects. For interiors that tell stories of great beauty.

Le molteplici fonti d'ispirazione di Chapter XII hanno un minimo comune denominatore: un viaggio immaginario attraverso l'Italia, fra interni ed esterni, per esplorare nuovi contorni stilistici, abbinando motivi iconici e mondi rivisitati. Vengono evocate città e paesaggi reinterpretati con stile lomografico e trasformati in immagini sbiadite e sbavature dagli effetti fotografici suggestivi.

La collezione getta ponti tra le forme astratte e cubiste dell'arte novecentista, il vocabolario grafico degli anni Settanta e dense pennellate di colore che ritraggono una natura dalle mille sfaccettature, talvolta pallida e sfuggente, talvolta esuberante e gioiosa.

Una vera wunderkammer a cui attingere per trasferire creatività e personalità ai progetti di interior design. Per interni che narrano storie di grande bellezza.

ALPHABETICAL INDEX

Adorni	84	Eterna	44	Presence	40
Agave	86	Ethos	80	Retorica	69
Alchemy	101	Étoile	85	Rising Sun	45
Apollineo	46	Fireworks	65	Roots	94
Arena	66	Fortuna	70	Sapphire	89
Assolo	68	Gaia	88	Serenissima	42
Astratto	58	Gelso	77	Sipario	49
Atomo	62	Greenhouse	36	Soffuso	37
Bacio	73	Harper	90	Soledad	72
Ballet	56	Hibiscus	98	Stillness	82
Beauté	100	Imperium	50	Suspended Light	76
Crayon	53	Intonaco	64	Tessere	32
Danse	97	Kiwi	54	Tondo	60
Deliciosa	24	Magister	52	Tourmaline	81
Dodo	61	Mémoire	33	Trama	22
Dolce	78	Mosaico	48	Tropez	28
Dorazio	29	Ocean Victory	96	Vincent	30
Ducale	57	Pacific	34	Wassily	25
Découpage	26	Pirouette	92	Wild	41
Edera	74	Polare	38	Wildflowers	93

STYLE INDEX

NATURE

Adorni, Alchemy,
Bacio, Beauté, Danse,
Découpage, Deliciosa,
Dolce, Edera, Étoile,
Fortuna, Gaia, Gelso,
Greenhouse, Harper,
Hibiscus, Mémoire,
Pacific, Polare, Rising
Sun, Eterna, Sapphire,
Soffuso, Soledad,
Stillness, Suspended
Light, Tropez, Wild,
Wildflowers

LANDSCAPES

Eterna, Greenhouse,
Pacific, Rising Sun,
Serenissima, Soffuso,
Soledad, Stillness, Wild

ABSTRACT

Agave, Apollineo,
Arena, Assolo, Astratto,
Atomo, Ballet, Crayon,
Découpage, Deliciosa,
Dodo, Dorazio, Ducale,
Ethos, Fireworks,
Imperium, Intonaco,
Kiwi, Magister, Mémoire,
Mosaico, Ocean Victory,
Pirouette, Presence,
Retorica, Roots,
Sipario, Tessere, Tondo,
Tourmaline, Trama,
Tropez, Vincent, Wassily

GEOMETRIC

Arena, Assolo,
Atomo, Ballet, Crayon,
Découpage, Deliciosa,
Dorazio, Ducale, Ethos,
Gelso, Magister, Mosaico,
Retorica, Sipario, Tessere,
Tondo, Trama, Tropez,
Vincent, Wassily

RECOMMENDED FOR GLAMTRACE

Adorni, Alchemy,
Apollineo, Arena,
Astratto, Atomo, Ballet,
Beauté, Crayon, Danse,
Deliciosa, Dodo, Dolce,
Découpage, Étoile,
Fireworks, Hibiscus,
Intonaco, Magister,
Mosaico, Ocean Victory,
Pirouette, Roots, Soledad,
Stillness, Tessere,
Tondo, Tropez, Wassily,
Wildflowers

The answer is dreams.
Dreaming on and on.
Entering the world of dreams
and never coming out.
Living in dreams for the rest of time.

HARUKI MURAKAMI



DELICIOSA



Code: GLXII151A
Colour Variants: P. 104

WASSILY

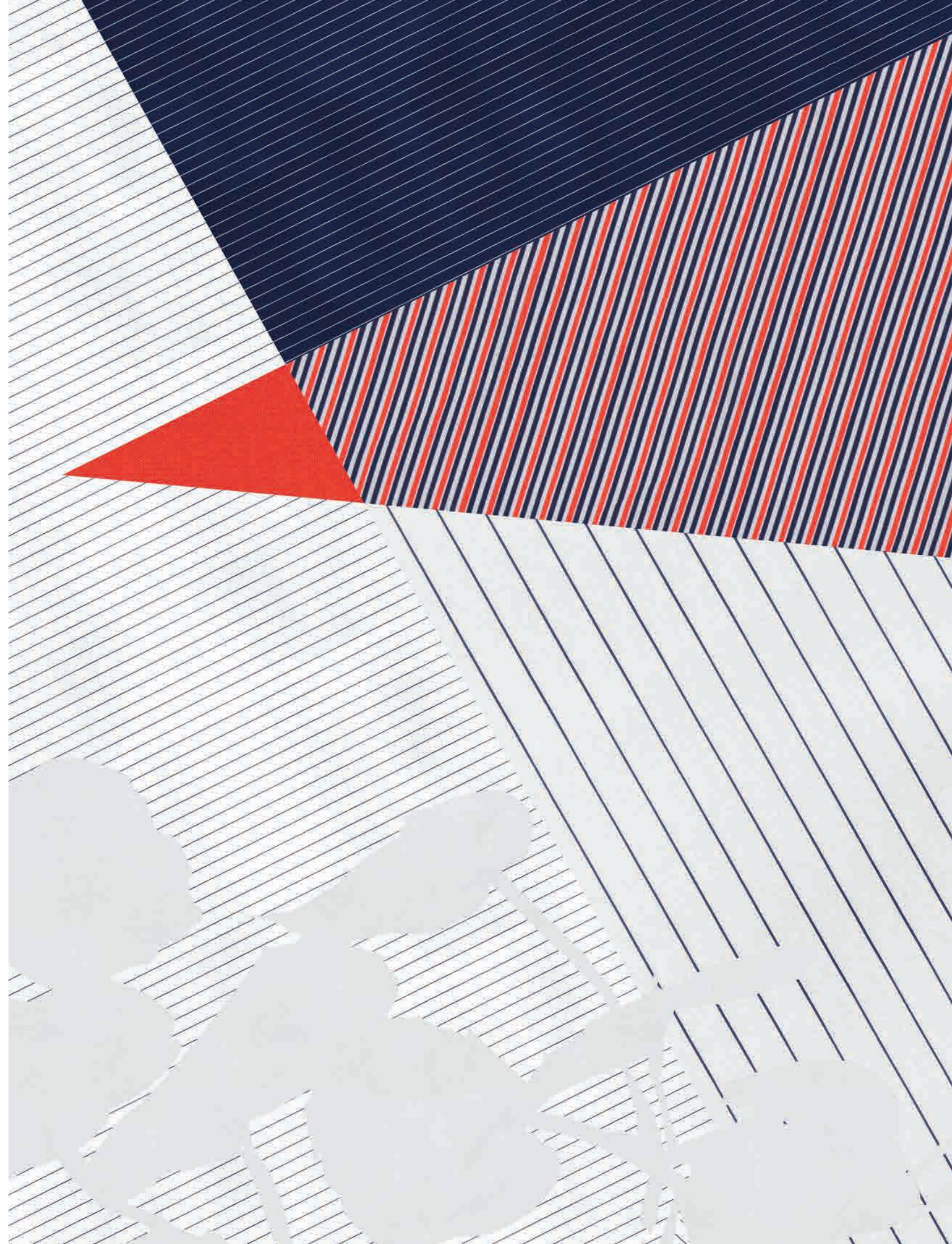


Code: GLXII641A
Colour Variants: P. 104

DÉCOUPAGE



Code: GLXII211A
Colour Variants: P. 104



TROPEZ



Code: GLXII621A
Colour Variants: P. 105

DORAZIO



Code: GLXII181A
Colour Variants: P. 105

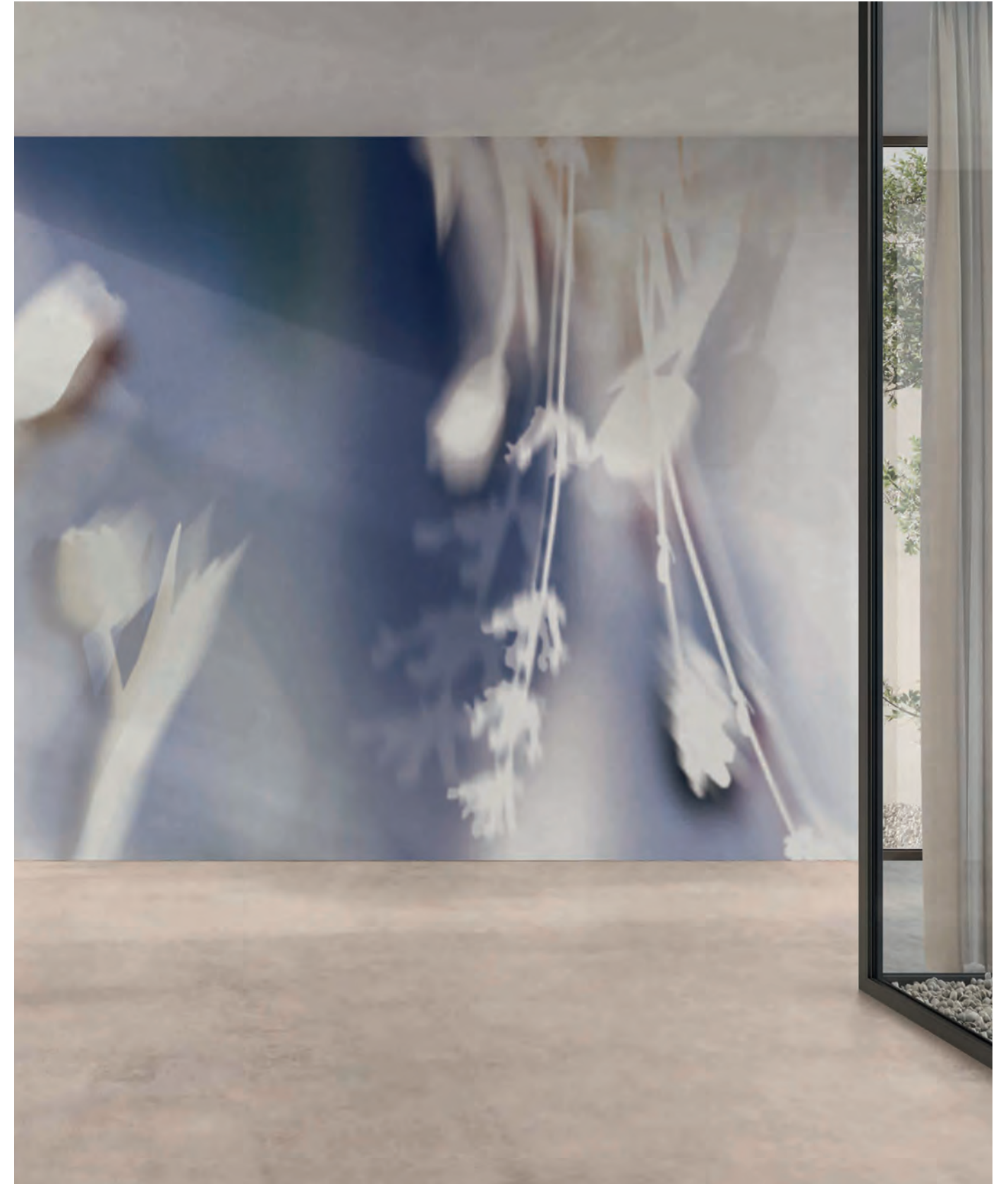


TESSERE



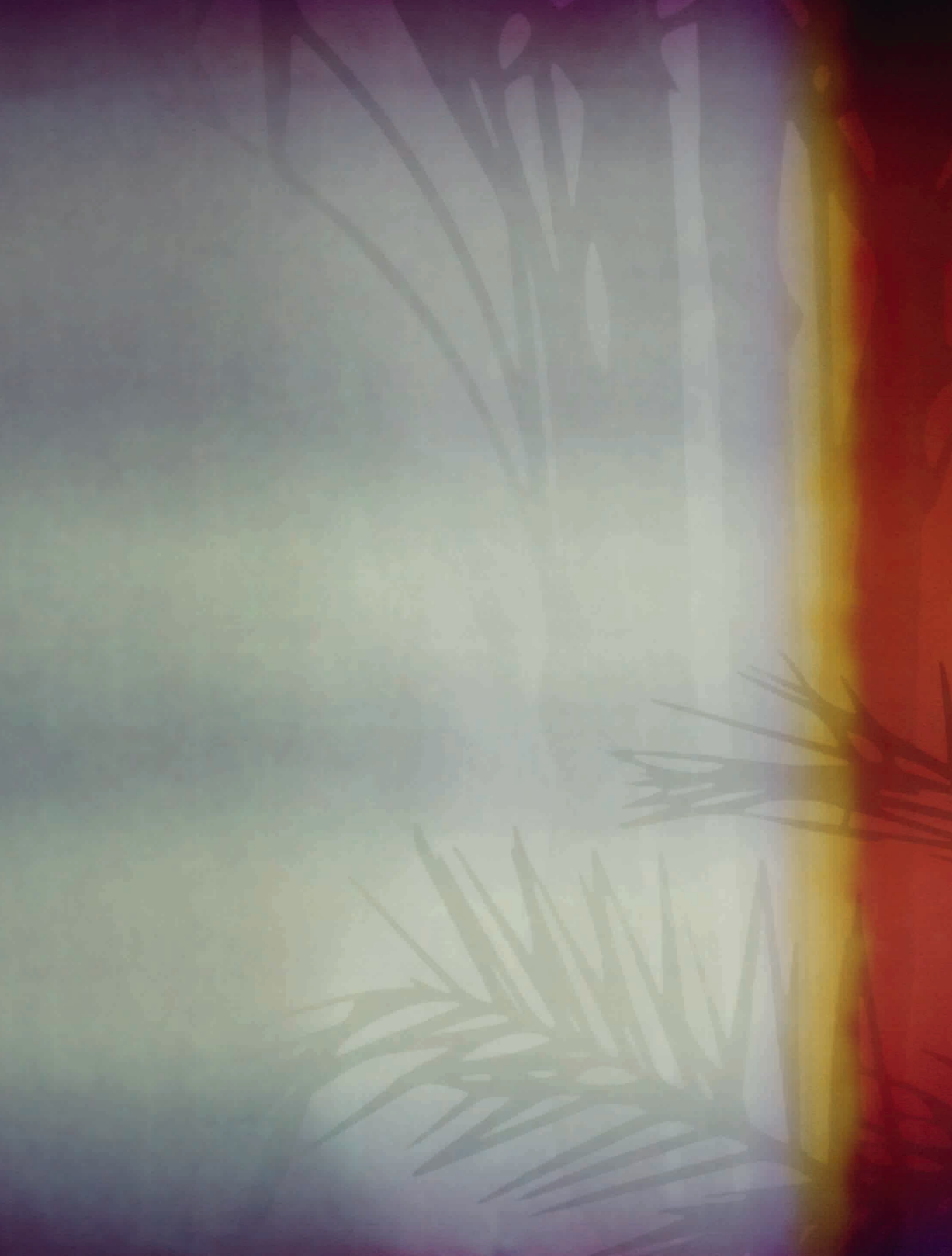
Code: GLXII571A
Colour Variants: P. 105

MÉMOIRE



Code: GLXII381A
Colour Variants: P. 106

PACIFIC



Code: GLXII411A
Colour Variants: P. 106

GREENHOUSE



Code: GLXII291A
Colour Variants: P. 106

SOFFUSO



Code: GLXII531A
Colour Variants: P. 106



PRESENCE



Code: GLXII441A
Colour Variants: P. 107

WILD



Code: GLXII651A
Colour Variants: P. 107

SERENISSIMA



Code: GLXII511A
Colour Variants: P. 107



ETERNA



Code: GLXII471A
Colour Variants: P. 108

RISING SUN



Code: GLXII461A
Colour Variants: P. 108



MOSAICO



Code: GLXII371A
Colour Variants: P. 108

SIPARIO



Code: GLXII521A
Colour Variants: P. 109

IMPERIUM



Code: GLXII331A
Colour Variants: P. 109

MAGISTER



Code: GLXII361A
Colour Variants: P. 109

CRAYON



Code: GLXII131A
Colour Variants: P. 109



BALLET



Code: GLXII111A
Colour Variants: P. 110

DUCALE



Code: GLXII191A
Colour Variants: P. 110

ASTRATTO



Code: GLXII71A
Colour Variants: P. 110



TONDO



Code: GLXII581A
Colour Variants: P. 111

DODO



Code: GLXII161A
Colour Variants: P. 111

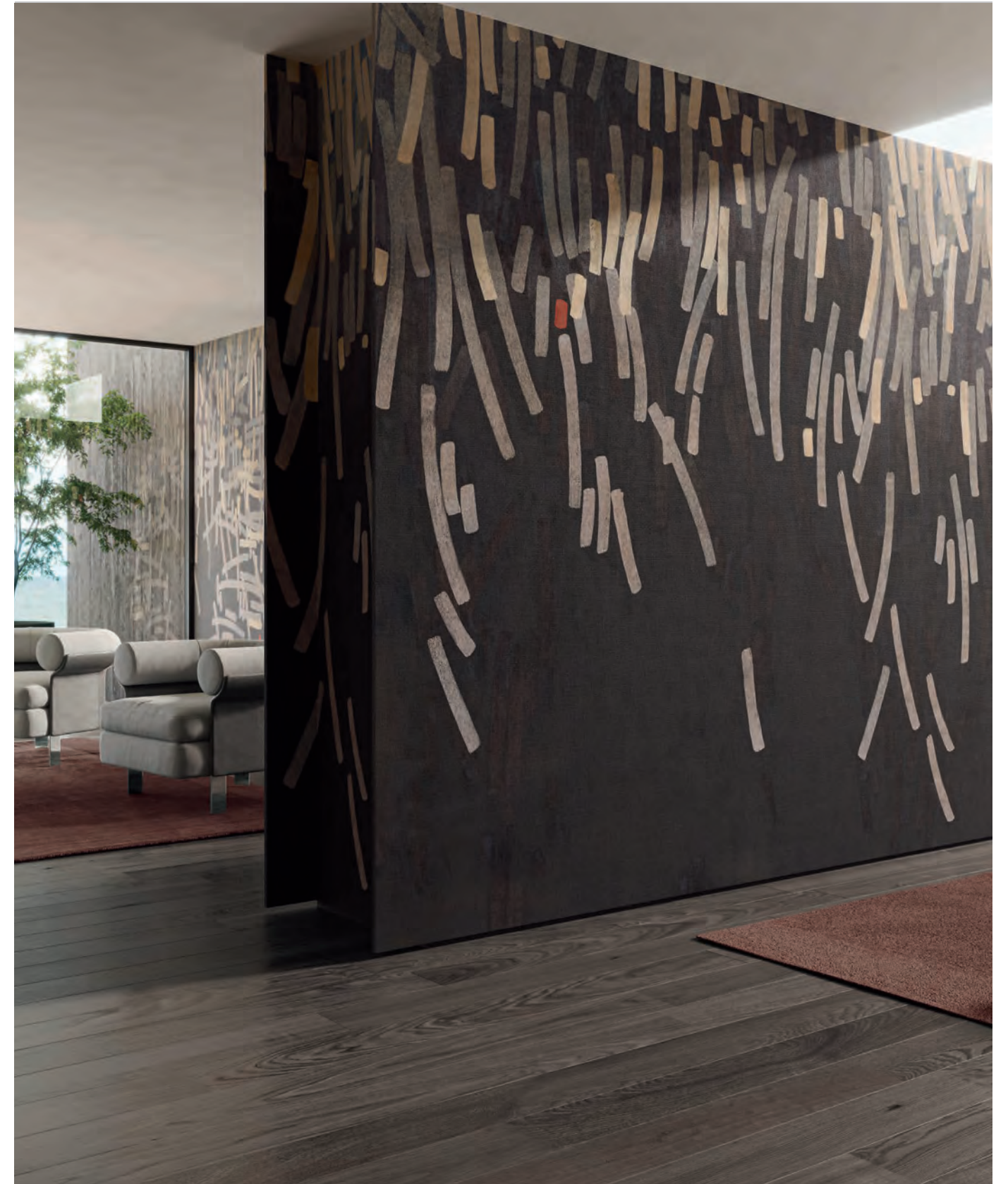


INTONACO



Code: GLXII341A
Colour Variants: P. 111

FIREWORKS



Code: GLXII251A
Colour Variants: P. 112

ARENA



Code: GLXII51A
Colour Variants: P. 112

ASSOLO



Code: GLXII61A
Colour Variants: P. 112

RETORICA



Code: GLXII451A
Colour Variants: P. 112



SOLEDAD



Code: GLXII541A
Colour Variants: P. 113

BACIO



Code: GLXII91A
Colour Variants: P. 113

EDERA



Code: GLXII221A
Colour Variants: P. 113



SUSPENDED LIGHT



Code: GLXII561A
Colour Variants: P. 114

GELSO



Code: GLXII281A
Colour Variants: P. 114

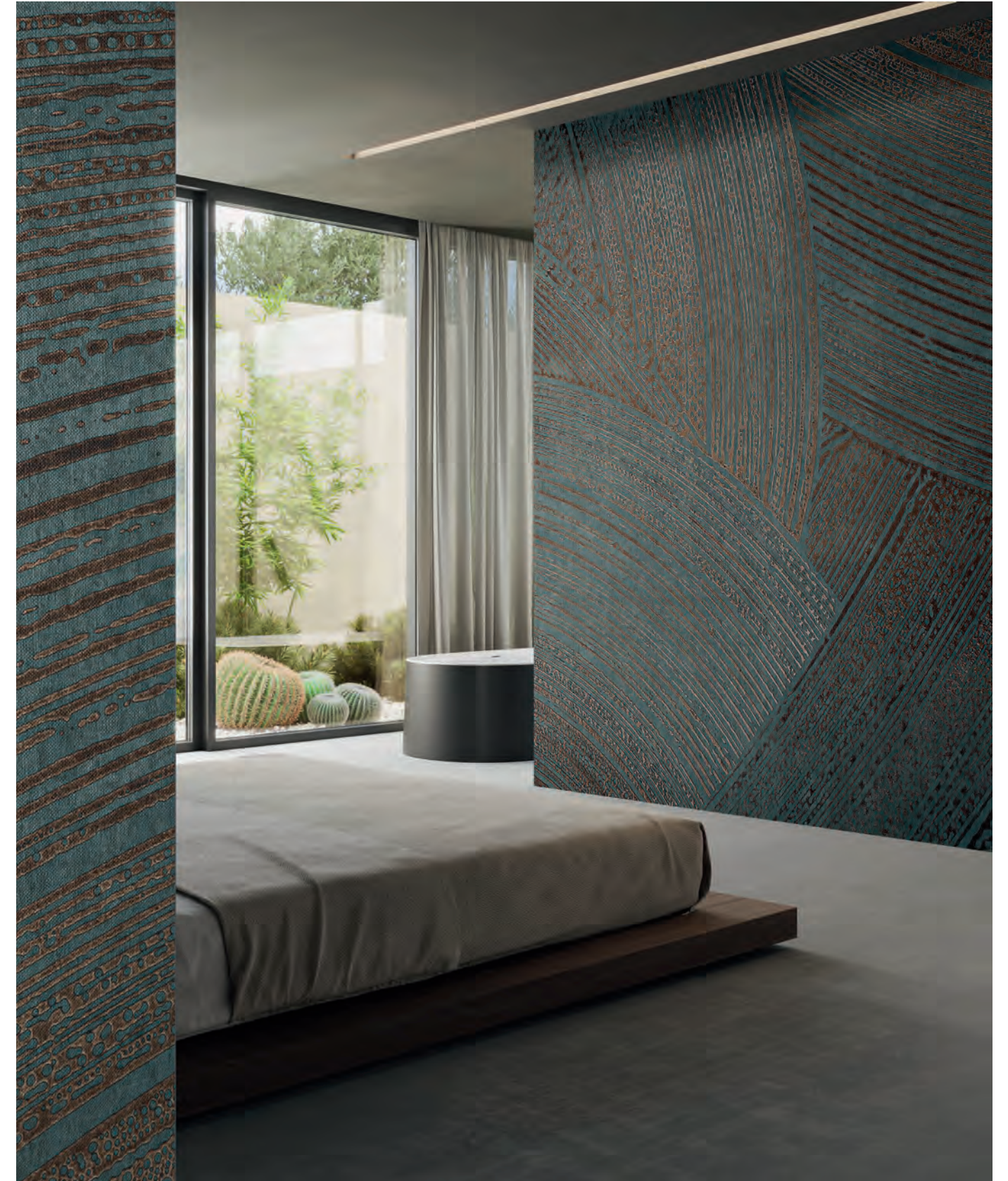


ETHOS



Code: GLXII231A
Colour Variants: P. 114

TOURMALINE



Code: GLXII591A
Colour Variants: P. 115

STILLNESS



Code: GLXII551A
Colour Variants: P. 115

ADORNI



Code: GLXII11A
Colour Variants: P. 115

ÉTOILE



Code: GLXII241A
Colour Variants: P. 115



GAIA



Code: GLXII271A
Colour Variants: P. 116

SAPPHIRE



Code: GLXII491A
Colour Variants: P. 116

HARPER



Code: GLXII311A
Colour Variants: P. 116



PIROUETTE



Code: GLXII421A
Colour Variants: P. 117

WILDFLOWERS



Code: GLXII661A
Colour Variants: P. 117



OCEAN VICTORY



Code: GLXII391A
Colour Variants: P. 117

DANSE



Code: GLXII141A
Colour Variants: P. 118

HIBISCUS



Code: GLXII321A
Colour Variants: P. 118

BEAUTÉ



Code: GLXII121A
Colour Variants: P. 118

ALCHEMY

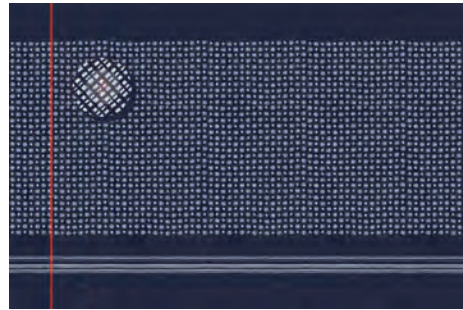


Code: GLXII31A
Colour Variants: P. 118

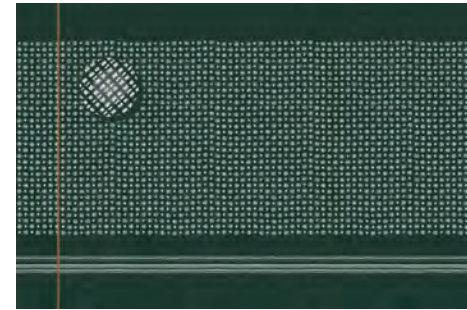
COLOUR VARIANTS

COLOUR VARIANTS

TRAMA
P. 22

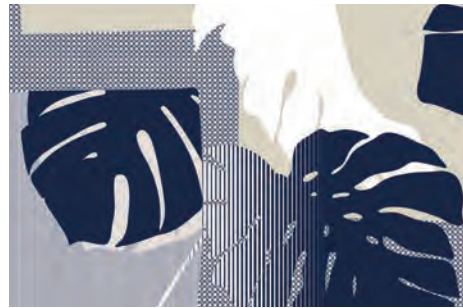


GLXII611A



GLXII612A

DELICIOSA
P. 24

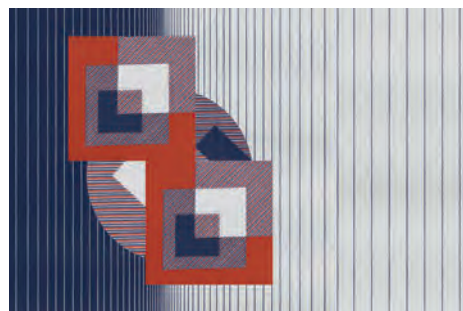


GLXII151A

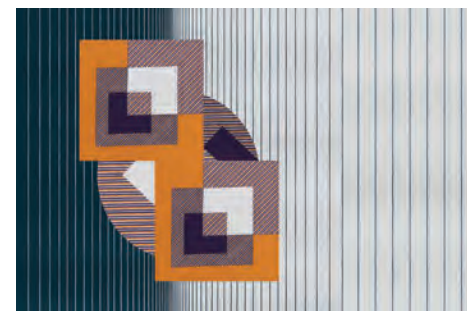


GLXII152A

WASSILY
P. 25



GLXII641A



GLXII642A

DÉCOUPAGE
P. 26



GLXII211A



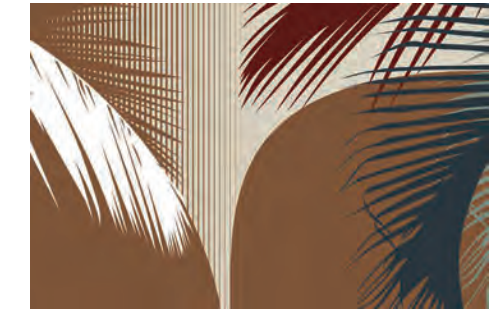
GLXII212A

COLOUR VARIANTS

TROPEZ
P. 28



GLXII621A



GLXII622A

DORAZIO
P. 29



GLXII181A



GLXII182A

VINCENT
P. 30

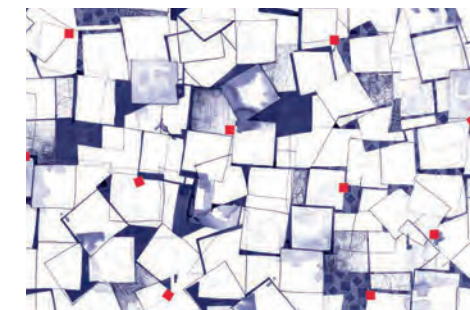


GLXII631A



GLXII632A

TESSERE
P. 32



GLXII571A



GLXII572A

The colours printed in this catalogue are to be considered merely indicative and have no colour proof value.
Le colorazioni dei prodotti riportati sul catalogo sono da ritenersi puramente indicative e non hanno valore di prova colore.

The colours printed in this catalogue are to be considered merely indicative and have no colour proof value.
Le colorazioni dei prodotti riportati sul catalogo sono da ritenersi puramente indicative e non hanno valore di prova colore.

COLOUR VARIANTS

MÉMOIRE
P. 33

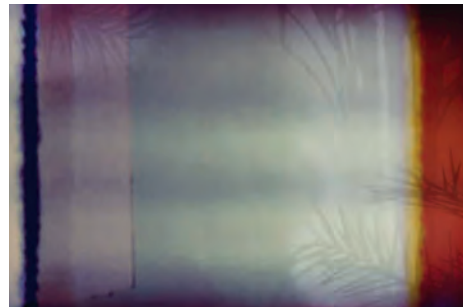


GLXII381A



GLXII382A

PACIFIC
P. 34



GLXII411A



GLXII412A

GREENHOUSE
P. 36

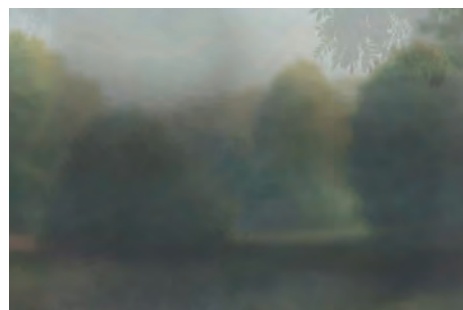


GLXII291A

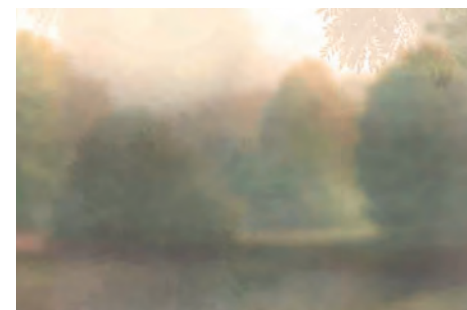


GLXII292A

SOFFUSO
P. 37



GLXII531A



GLXII532A

COLOUR VARIANTS

POLARE
P. 38



GLXII431A



GLXII432A

PRESENCE
P. 40

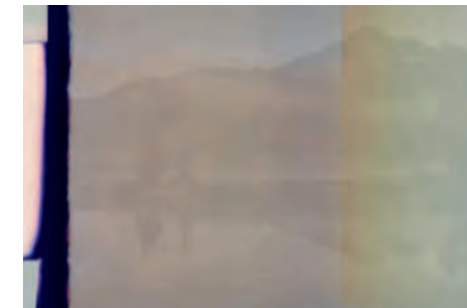


GLXII441A



GLXII442A

WILD
P. 41

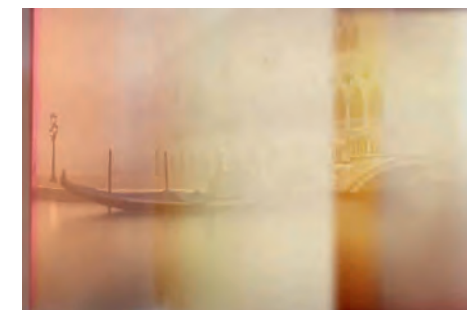


GLXII651A

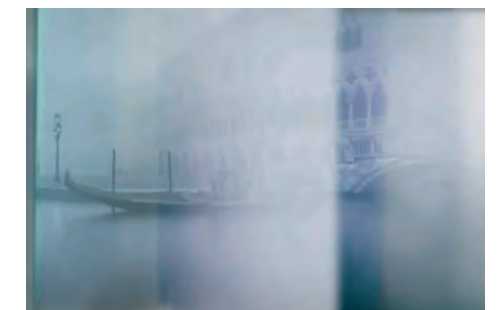


GLXII652A

SERENISSIMA
P. 42



GLXII511A



GLXII512A

The colours printed in this catalogue are to be considered merely indicative and have no colour proof value.
Le colorazioni dei prodotti riportati sul catalogo sono da ritenersi puramente indicative e non hanno valore di prova colore.

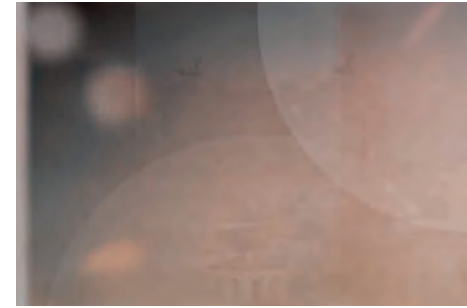
The colours printed in this catalogue are to be considered merely indicative and have no colour proof value.
Le colorazioni dei prodotti riportati sul catalogo sono da ritenersi puramente indicative e non hanno valore di prova colore.

COLOUR VARIANTS

ETERNA
P. 44



GLXII471A



GLXII472A

RISING SUN
P. 45

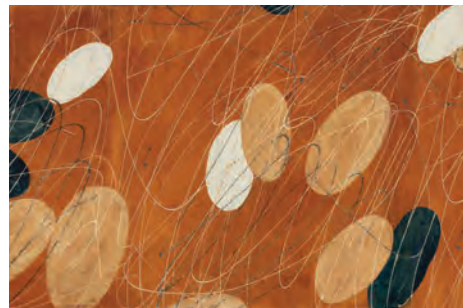


GLXII461A



GLXII462A

APOLLINEO
P. 46



GLXII41A

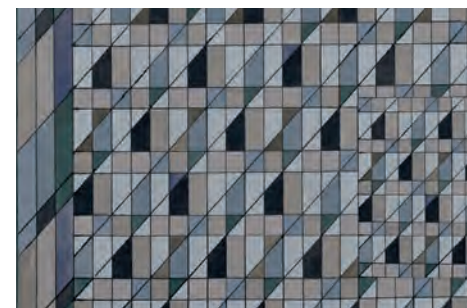


GLXII42A

MOSAICO
P. 48



GLXII371A



GLXII372A

COLOUR VARIANTS

SIPARIO
P. 49



GLXII521A



GLXII522A

IMPERIUM
P. 50



GLXII331A

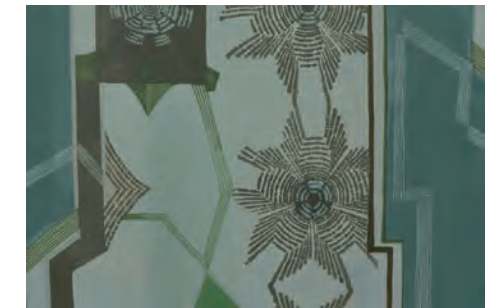


GLXII332A

MAGISTER
P. 52



GLXII361A

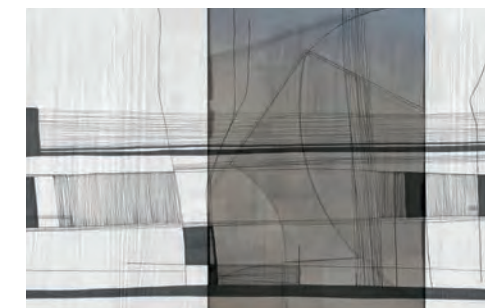


GLXII362A

CRAYON
P. 53



GLXII131A



GLXII132A

The colours printed in this catalogue are to be considered merely indicative and have no colour proof value.
Le colorazioni dei prodotti riportati sul catalogo sono da ritenersi puramente indicative e non hanno valore di prova colore.

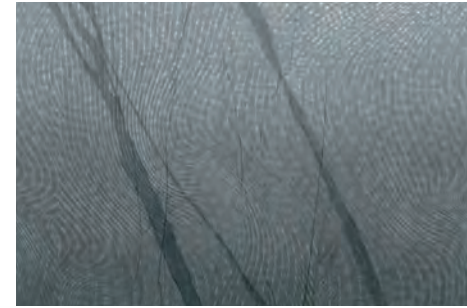
The colours printed in this catalogue are to be considered merely indicative and have no colour proof value.
Le colorazioni dei prodotti riportati sul catalogo sono da ritenersi puramente indicative e non hanno valore di prova colore.

COLOUR VARIANTS

KIWI
P. 54



GLXII351A



GLXII352A

BALLET
P. 56



GLXII111A



GLXII112A

DUCALE
P. 57



GLXII191A

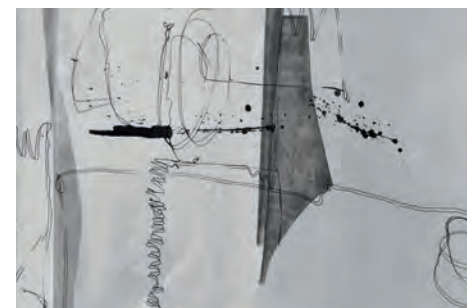


GLXII192A

ASTRATTO
P. 58



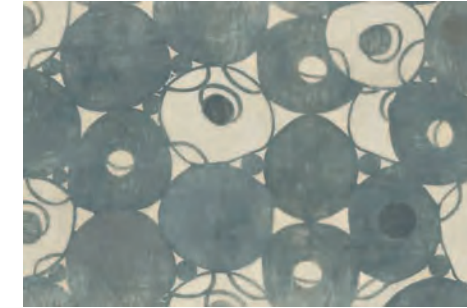
GLXII71A



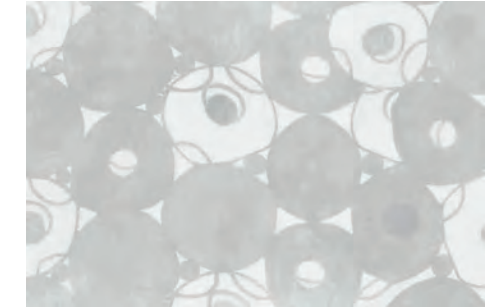
GLXII72A

COLOUR VARIANTS

TONDO
P. 60



GLXII581A



GLXII582A

DODO
P. 61



GLXII161A



GLXII162A

ATOMO
P. 62



GLXII81A



GLXII82A

INTONACO
P. 64



GLXII341A



GLXII342A

The colours printed in this catalogue are to be considered merely indicative and have no colour proof value.
Le colorazioni dei prodotti riportati sul catalogo sono da ritenersi puramente indicative e non hanno valore di prova colore.

The colours printed in this catalogue are to be considered merely indicative and have no colour proof value.
Le colorazioni dei prodotti riportati sul catalogo sono da ritenersi puramente indicative e non hanno valore di prova colore.

COLOUR VARIANTS

FIREWORKS
P. 65



GLXII251A



GLXII252A

ARENA
P. 66

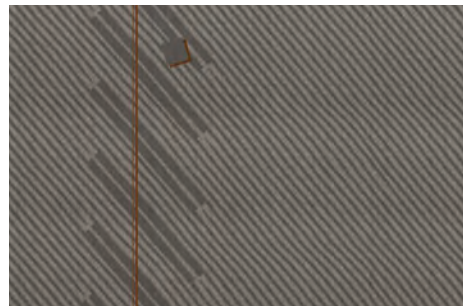


GLXII51A

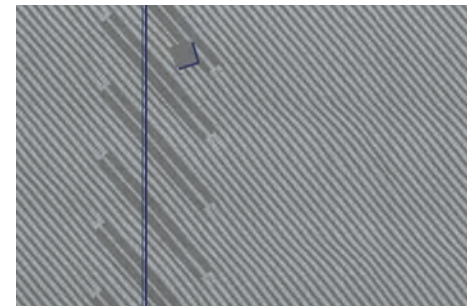


GLXII52A

ASSOLO
P. 68



GLXII61A



GLXII62A

RETORICA
P. 69



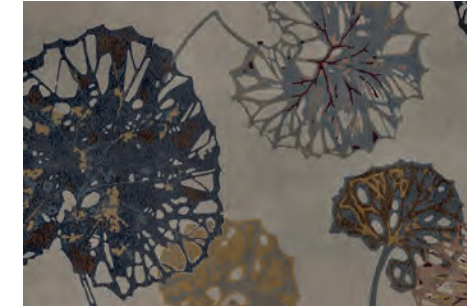
GLXII451A



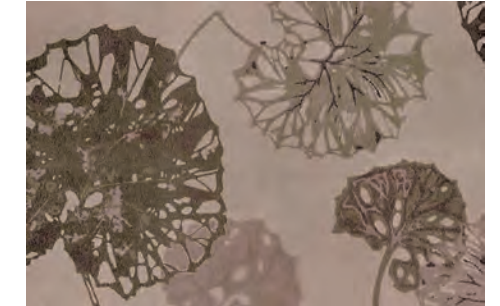
GLXII452A

COLOUR VARIANTS

FORTUNA
P. 70

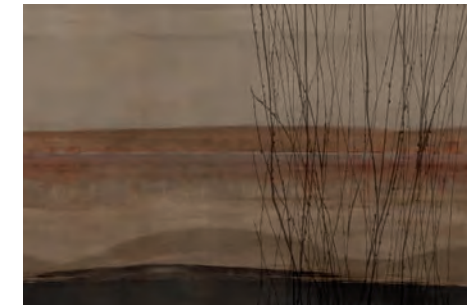


GLXII261A



GLXII262A

SOLEDAD
P. 72

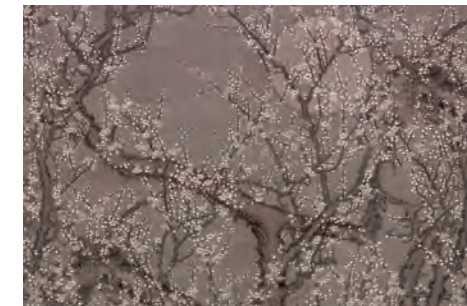


GLXII541A

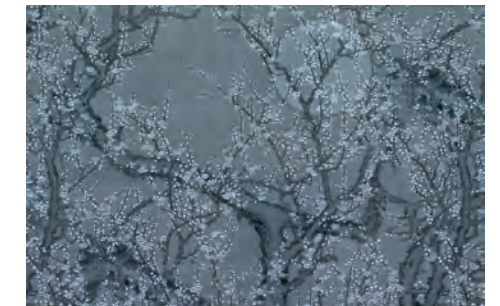


GLXII542A

BACIO
P. 73

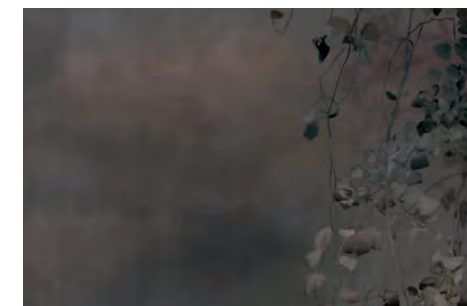


GLXII91A

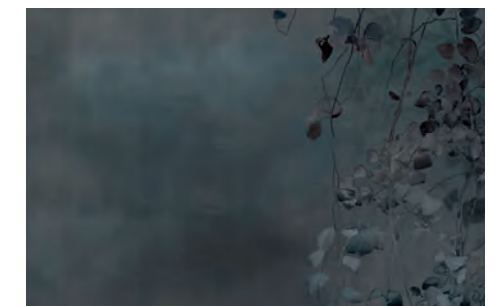


GLXII92A

EDERA
P. 74



GLXII221A



GLXII222A

The colours printed in this catalogue are to be considered merely indicative and have no colour proof value.
Le colorazioni dei prodotti riportati sul catalogo sono da ritenersi puramente indicative e non hanno valore di prova colore.

The colours printed in this catalogue are to be considered merely indicative and have no colour proof value.
Le colorazioni dei prodotti riportati sul catalogo sono da ritenersi puramente indicative e non hanno valore di prova colore.

COLOUR VARIANTS

SUSPENDED LIGHT
P. 76



GLXII561A



GLXII562A

GELSO
P. 77



GLXII281A

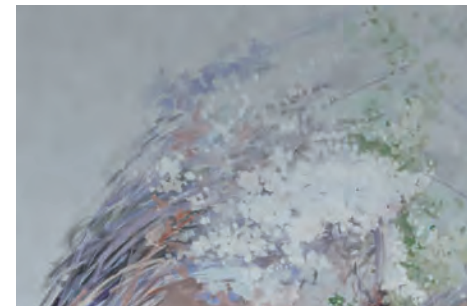


GLXII282A

DOLCE
P. 78



GLXII171A



GLXII172A

ETHOS
P. 80



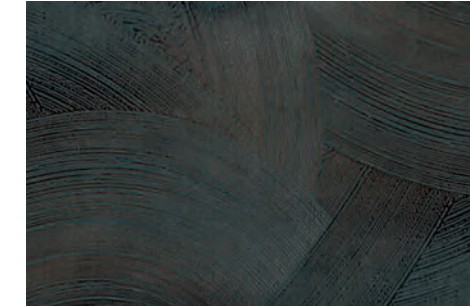
GLXII231A



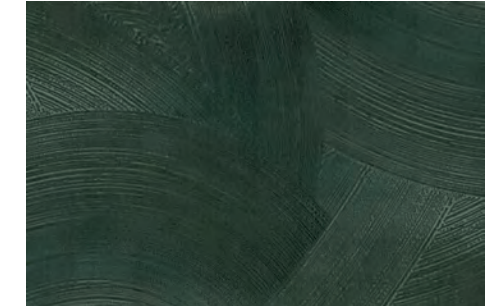
GLXII232A

COLOUR VARIANTS

TOURMALINE
P. 81



GLXII591A

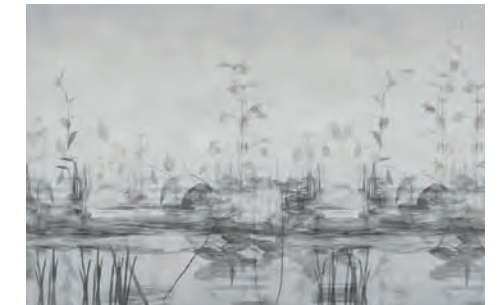


GLXII592A

STILLNESS
P. 82



GLXII551A



GLXII552A

ADORNI
P. 84



GLXII11A

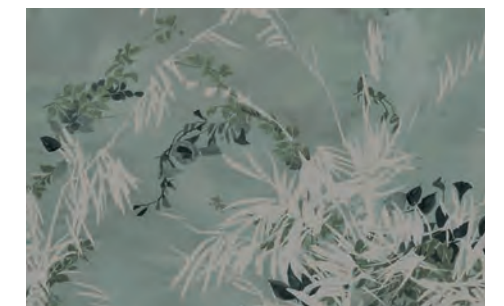


GLXII12A

ÉTOILE
P. 85



GLXII241A



GLXII242A

The colours printed in this catalogue are to be considered merely indicative and have no colour proof value.
Le colorazioni dei prodotti riportati sul catalogo sono da ritenersi puramente indicative e non hanno valore di prova colore.

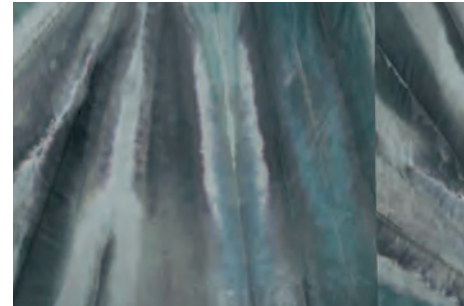
The colours printed in this catalogue are to be considered merely indicative and have no colour proof value.
Le colorazioni dei prodotti riportati sul catalogo sono da ritenersi puramente indicative e non hanno valore di prova colore.

COLOUR VARIANTS

AGAVE
P. 86

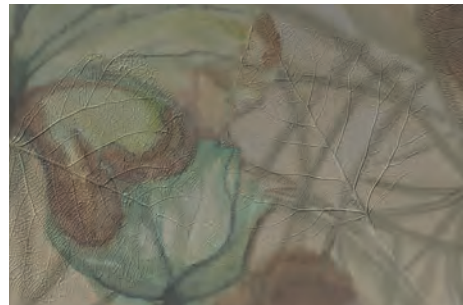


GLXII21A

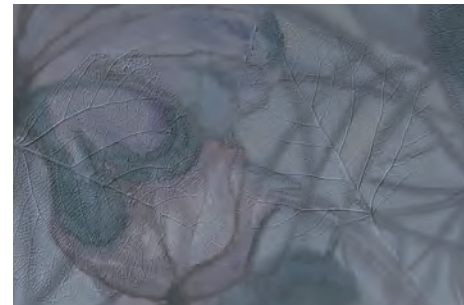


GLXII22A

GAIA
P. 88



GLXII271A



GLXII272A

SAPPHIRE
P. 89



GLXII491A



GLXII492A

HARPER
P. 90



GLXII311A



GLXII312A

COLOUR VARIANTS

PIROUETTE
P. 92



GLXII421A



GLXII422A

WILDFLOWERS
P. 93



GLXII661A

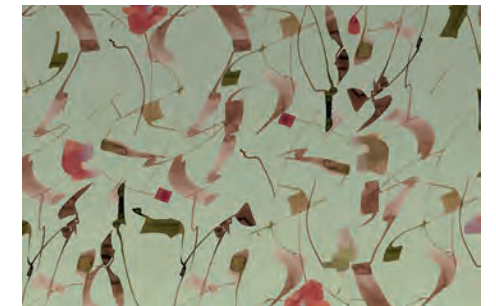


GLXII662A

ROOTS
P. 94

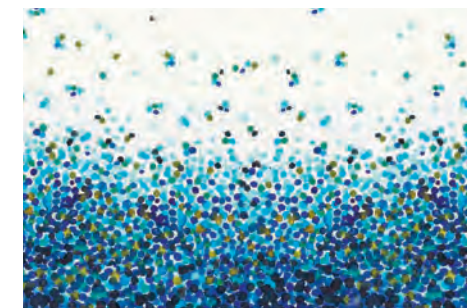


GLXII481A

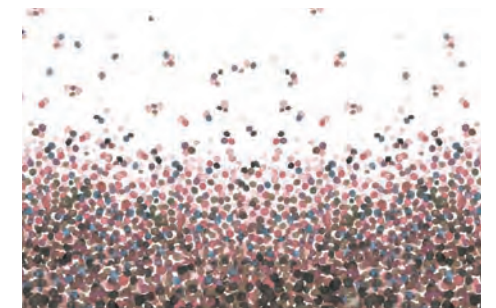


GLXII482A

OCEAN VICTORY
P. 96



GLXII391A



GLXII392A

The colours printed in this catalogue are to be considered merely indicative and have no colour proof value.
Le colorazioni dei prodotti riportati sul catalogo sono da ritenersi puramente indicative e non hanno valore di prova colore.

The colours printed in this catalogue are to be considered merely indicative and have no colour proof value.
Le colorazioni dei prodotti riportati sul catalogo sono da ritenersi puramente indicative e non hanno valore di prova colore.

COLOUR VARIANTS

DANSE
P. 97



GLXII141A



GLXII142A

HIBISCUS
P. 98



GLXII321A



GLXII322A

BEAUTÉ
P. 100

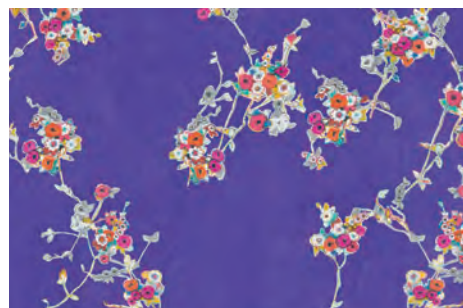


GLXII121A

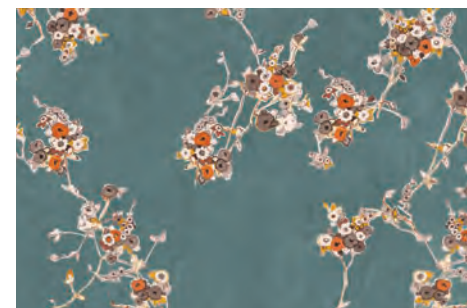


GLXII122A

ALCHEMY
P. 101



GLXII31A



GLXII32A

The colours printed in this catalogue are to be considered merely indicative and have no colour proof value.
Le colorazioni dei prodotti riportati sul catalogo sono da ritenersi puramente indicative e non hanno valore di prova colore.

TECHNICAL INFORMATION

GlamDecor, The Vinyl Wallcovering

Description of material <i>Descrizione materiale</i>	Nonwoven fabric with decorative PVC surface layer, realised with environmentally friendly, breathable, and odourless inks. <i>Tessuto-non-tessuto con superficie decorativa in PVC, prodotto con inchiostri ecologici, respirabili e inodori.</i>
Intended use <i>Destinazione d'uso</i>	Walls, ceilings, doors, and wardrobes in residential, commercial, hospitality and healthcare indoor environments. <i>Pareti, soffitti, porte e armadi di ambienti interni, residenziali, commerciali, hospitality e sanitari.</i>

TECHNICAL SPECIFICATIONS | SPECIFICHE TECNICHE

Roll width <i>Larghezza rotolo</i>	19.68 in 50 cm
Roll length <i>Lunghezza rotolo</i>	custom <i>personalizzata</i>
Thickness <i>Spessore</i>	0.019 in 0,49 mm
Weight <i>Peso</i>	1.18 (± 0.06) oz/sq ft 360 (± 20) g/m ²

CERTIFICATIONS | CERTIFICAZIONI

Reaction to fire <i>Reazione al fuoco</i>	B-s1, d0 ASTM class A SGS China compliant <i>B-s1, d0 ASTM classe A conforme a SGS China</i>
VOCs	LEED v4.1 French VOC regulation A+ BREEAM International Italian CAM <i>Greenguard Gold Compliant inks Inchiostri conformi a Greenguard Gold</i>
Further certifications <i>Ulteriori certificazioni</i>	REACH reg. EC N°1907/2006 EU Bio-Pruf® anti-bacterial

INSTALLATION TUTORIAL



FSC®



Extra washable
Altamente lavabile



Dry strippable
Removibile a secco



Textured surface
Superficie materica



Impact resistant
Resistente agli urti



Lightfast
Resistente alla luce

TECHNICAL INFORMATION

GlamTrace, The Nonwoven Wallcovering

Description of material <i>Descrizione materiale</i>	The nonwoven fabric wallcovering, produced with cellulose fibre patterns which highlight the irregularities of the natural fibres. The thin, opaque material surface faithfully reproduces pictorial chromatic effects. <i>Il rivestimento murale in tessuto-non-tessuto, realizzato in fibra di cellulosa che esalta le irregolarità della trama naturale. La superficie materica sottile e opaca restituisce pittorici effetti cromatici.</i>
Intended use <i>Destinazione d'uso</i>	Walls, ceilings, doors, and wardrobes in residential, commercial and hospitality indoor environments. <i>Pareti, soffitti, porte e armadi di ambienti interni, residenziali, commerciali e hospitality.</i>

TECHNICAL SPECIFICATIONS | SPECIFICHE TECNICHE

Roll width <i>Larghezza rotolo</i>	22.44 in 57 cm
Roll length <i>Lunghezza rotolo</i>	custom <i>personalizzata</i>
Thickness <i>Spessore</i>	0.015 in 0,38 mm
Weight <i>Peso</i>	0.48 (± 0.06) oz/sq ft 147 (± 20) g/m ²
Composition <i>Composizione</i>	Nonwoven fabric <i>Tessuto-non-tessuto</i>

CERTIFICATIONS | CERTIFICAZIONI

Reaction to fire <i>Reazione al fuoco</i>	B-s1, d0 according to EN 13501-1 <i>B-s1, d0 secondo EN 13501-1</i>
VOCs	French VOC regulation A+ <i>Greenguard Gold Compliant inks Inchiostri conformi a Greenguard Gold</i>
Management systems compliant <i>Conforme con sistemi di gestione</i>	509001:2015 (quality) FR 14/19043 OHSAS18001:2008 (safety) FR 14/19042 15014001:2015 (environment) FR 14/1904

INSTALLATION TUTORIAL



Nonwoven
Tessuto-non-tessuto



OEKO-TEX®



FSC®



Sustainable
Sostenibile



Breathable
Traspirante



Washable
Lavabile



Dry strippable
Removibile a secco



Textured surface
Superficie materica

GLAMORA

Glamora Srl
Via Berna, 12/14
41049 Sassuolo (MO) - Italy
T. +39 0536 076403
contact@glamora.it
glamora.it

Glamora Showroom
Via Solferino, 27
20121 Milano - Italy

No part of this work can be reproduced in any way
without the preventive written authorization by Glamora.
All work is copyrighted © to their respective owners.

